



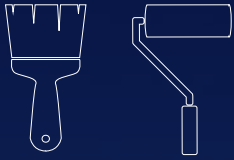
# JOTUN

Jotun Protects Property



Onboard maintenance  
without breaking the bank

***Jotafix***



# Jotafix

## Efficient maintenance with brush and roller

Jotafix system consist of Jotafix Epoxy Primer and Jotafix PU Topcoat and is designed for onboard maintenance with brush and roller application.

- ✓ Class-leading brush and roller properties
- ✓ Class-leading anticorrosive properties
- ✓ Class-leading finish, with good initial gloss level and gloss retention



### JOTAFIX EPOXY PRIMER:

- Designed for brush and roller
- Also suitable for airless spray
- Easy to apply high film thickness
- Surface tolerant
- Class-leading in solids by volume: 68% +/- 2
- Good flow properties without sagging
- Pot life at 23 °C: 2 hours
- Application temp.: 5-40 °C
- Colours: Red and grey

### JOTAFIX PU TOPCOAT:

- Designed for brush and roller
- Also suitable for airless spray
- Easy to apply high film thickness
- Polyurethane topcoat with good initial gloss and hiding power
- Class-leading in solids by volume: 61% +/- 2
- Pot life at 23 °C: 1.5 hours
- Application temp.: 5-40 °C
- Colours: Tintable MCI



## Time saved on application:

Fewer coats = reduced man-hours = reduced cost

## Extended maintenance intervals:

Thick and intact paint film = good protection = reduced maintenance costs



## Reference

Reference application on Norwegian passenger ship, carried out by professional crew members in August 2016. Benefits highlighted by the crew:

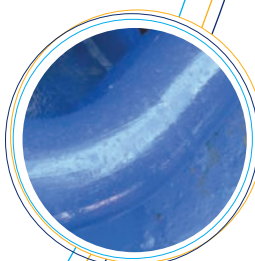
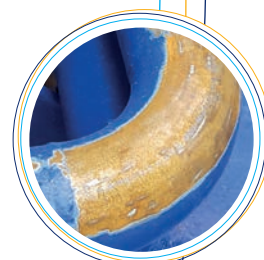
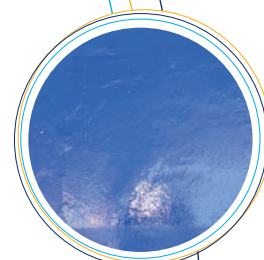
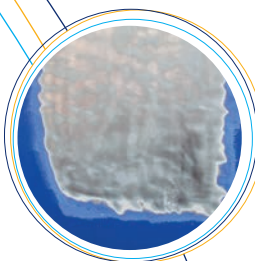
### JOTAFIX EPOXY PRIMER:

- ✓ Very good application properties using brush
- ✓ Good hiding power
- ✓ No dripping
- ✓ No sagging
- ✓ Very easy to apply with roller

### JOTAFIX PU TOPCOAT:

- ✓ No sagging
- ✓ Easy to apply with roller
- ✓ Good hiding power
- ✓ Glossy finish
- ✓ Easy to apply with brush

*In the Jotun maintenance manual you will find the Onboard maintenance paint guide that provides easy and practical support on how to plan onboard maintenance, and the safe and efficient process of paint application.*





8MM0539020 metrobranding.no

**Jotun A/S**  
P.O. Box 2021,  
N-3202 Sandefjord, Norway  
Tel: +47 33 45 70 00  
jotun.com



Jotun Protects Property

